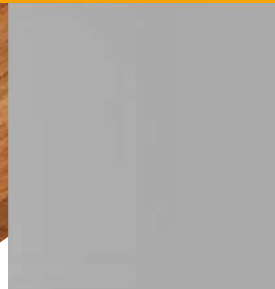


**CHAMP  
FOND** 



**Precision, Quality, Innovation**

長風創新 領導潮流



**CHAMP  
FOND** 

# High Speed Panel Saw 高速電腦裁板機



Picture shown model no. HS-135 / 3231 with optional floating tables 2.1M x 1 + 1.5M x 2 air blower x1.

## BS-105, HS-135

### Feature:

- Rigid heavy duty machine frame.
- High speed saw carriage capable of speeds of 100M/min, 160M/min or faster depending on requirements.
- The AC servo driven CNC panel pusher is capable of speeds of up to 100M/min.
- Maximum saw blade projection settings of 105mm or 135 mm are programmable through the PLC command.

### 特點:

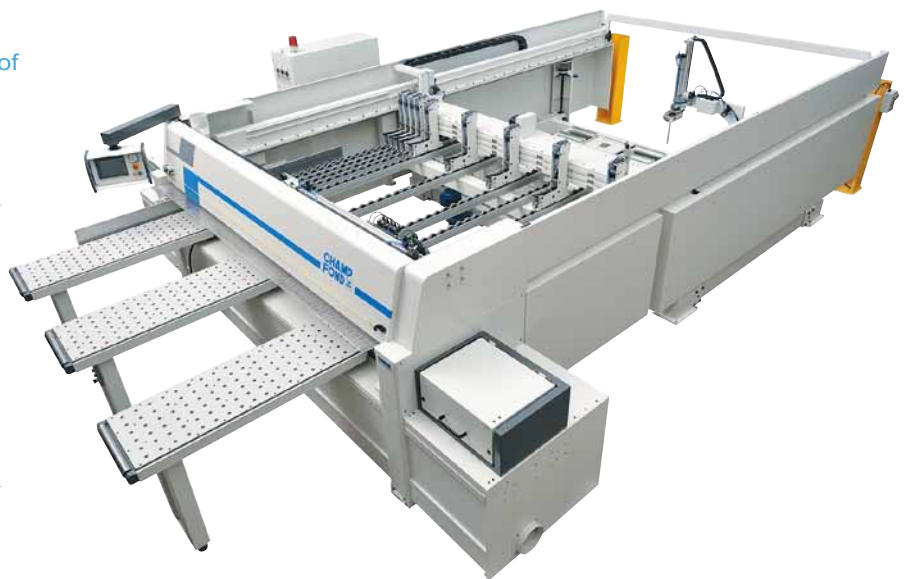
- 高強度機身。
- 配合高速台車速度可達100米/分鐘、160米/分鐘或更快速度。
- 電腦定位夾料器搭配伺服馬達速度可達100米/分鐘。
- 可程式控制鋸片露出高度程控105毫米或135毫米。

### Option:

- Automatic panel size measuring system.
- Piano-touch pressure element.
- Full coverage floating table.

### 選配:

- 自動量測系統。
- 琴鍵式壓板。
- 全浮動桌面。



## BS-105L, HS-135L

高速電腦裁板機 附自動送料裝置  
High Speed Panel Saw with Lifting Table

Computerly  
Detail  
Quality  
Innovation



Independent side press roller system, automatic align the cross cutting at right angle.

獨立側壓輪系統，自動對正橫切角度。



Hardened rail and heavy duty rack-pinion system.

硬化處理滑軌及重型齒條一齒輪系統。



The rigid aluminum alloy #7075-T6 saw cage, offer maximum cutting ability.

高剛性航太鋁合金台車，提供最佳切削能力。

## Specification:

Model No.	BS-105 / 3231	HS-135 / 3231	型 號
Saw carriage speed	100 M/Min.	160 M/Min. or faster	台車最快速度
Main saw motor	20 HP	30 HP (Opt. 40 HP)	主鋸片馬達
Scoring saw motor	2 HP		導引鋸馬達
Saw carriage driven motor	1 HP		台車往復馬達
Gripper unit speed	50 M/Min.	100 M/Min.	電腦夾料器最快速度
NC panel pusher motor	AC servo motor		電腦夾料器馬達種類
Maximum panel width	3,250 mm (Opt. 4,450 mm, 5,650 mm)		最大板寬
Maximum panel length	3,100 mm (Opt. 4,300 mm, 5,500 mm)		最大板長
Saw blade projection	Programable 0~105 mm	Programable 0~135 mm	鋸片露出高度
Main saw speed	3,850 rpm		主鋸片轉速
Scoring saw speed	7,000 rpm		導引鋸轉速
Compress air required	7~10 Kg /cm <sup>2</sup> (100~147 PSI)		壓縮空氣需求
Net weight	4,800 kg		機器淨重
Gross weight, pallet only	5,600 kg		總重，使用棧板
Packing dimensions	20 feet container required		包裝尺寸
Overall dimensions	525 x 590 x 170 cm		外觀尺寸
Model No.	BS-105L / 3222	HS-135L / 3222	型 號
Lifting table size	3.2 M x 2.2 M (Opt. 4.4 M x 2.2 M, 3.2 M x 2.5 M)		升降台尺寸
Lifting table height	H=0.56 M (Opt. H=1.08 M)		升降台高度
Lifting table load	Payload limited 2,000 kg		升降台負載
Net weight	9,000 Kg		機器淨重
Gross weight, pallet only	10,300 Kg		總重，使用棧板
Packing dimensions	40 feet container required		包裝尺寸
Overall dimensions	525 x 1,100 x 170 cm		外觀尺寸

(選項配備)



**CHAMP  
FOND** 

# Edgebander 自動直線封邊機



## Specification:

Model No.	EB-3	EB-4	EB-4S	EB-5B	EB-6BW	EB-7B	EL-70	EL-700	EL-800	EL-700Q	型號	
Controller	NC32						NC48				控制器	
Conveyor speed	18 ~ 24 M/Min.						18 ~ 22 M/Min.				輸送帶速度	
Pressure beam type	Roller type 膠輪式					Belt type 皮帶式					壓力樑種類	
Conveyor motor	3 HP					5 HP	3 HP	5 HP			輸送帶馬達	
Machine frame length	L35	L45			L50	L60	L50	L60			機身長度的	
Pre-mil unit							●	●	●		預洗單元	
Q-tools pre-mill unit										●	五刀頭預洗單元	
Sliding type snipping unit							●	●	●	●	雙斜式前後修單元	
Tacking type snipping unit	●	●	●	●	●	●					水平前後修單元	
Rough trimming unit	○	●	●	●	●	●	●	●	●	●	上下修單元	
Chamfer trimming unit	●	●	●	●	●	●	●				倒角修單元	
2 <sup>nd</sup> Chamfer trimming unit											第二倒角修單元	
Profile scraping unit				●	●	●		●	●	●	型刮刀單元	
Flat scraping unit							○				平刮刀單元	
Double grooving unit					●			●			雙溝槽單元	
Contour copy unit						●	●				仿角單元	
Multifunction contour copy unit								●	●	●	多功能仿角單元	
Sanding unit			●								砂光單元	
Buffing unit, 2 motors	○	●	●	●	●	●	●	●	●	●	拋光單元兩布輪	
Buffing unit, 4 motors				○	○	○	○		○	○	拋光單元四布輪	
Tape PVC 0.5~1mm	✓	✓	✓	✓	✓	✓	✓	✓	✓	✓	加工PVC 0.5mm	
Tape ABS 1~3mm				✓	✓	✓	✓	✓	✓	✓	加工ABS 1~3mm	
Quick setup 3 position								✓	✓	✓	三種厚度快速調整	
Working height	12 ~ 50 mm						12 ~ 60 mm				加工高度	
Minimum working length	150 mm											最小加工長度
Minimum working width	150 mm											最小加工寬度
Compress air required	7-10 kg/cm <sup>2</sup> (100-147 PSI)											壓縮空氣需求
Net weight	2,500 Kg	2,700 Kg	2,700 Kg	2,800 Kg	3,000 Kg	3,200 Kg	3,200 Kg	3,200 Kg	4,000 Kg	4,000 Kg	機器淨重	
Gross weight, pallet only	2,700 Kg	2,900 Kg	2,900 Kg	3,000 Kg	3,200 Kg	3,400 Kg	3,400 Kg	3,400 Kg	4,200 Kg	4,200 Kg	毛重，使用棧板	

● : Standard working unit. (標準配備)

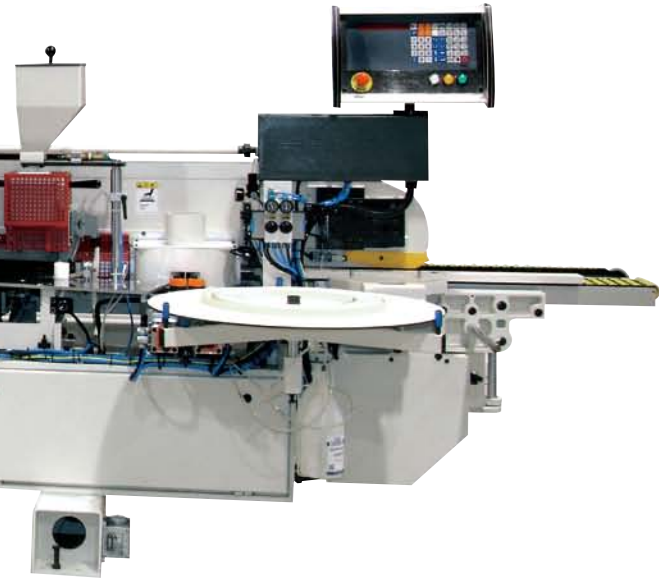
○ : Optional working unit, subject to available of free space. (選項配備但需考慮可用空間)

✓ : Applicable jobs with identify materials. (可應用邊條材料)

All specifications and design characteristics shown are subject to change without prior notice.

尺寸規格若有所變更恕不另行通知。

Computerly  
Detail  
Quality  
Innovation



## EL-700/800/700Q

### 自動封邊機 附快速調整裝置

Edgebander with Quick Setup Device

#### Optional for Model No. EL-700/800/700Q:

- Aux. side pressure roller system for narrow piece.
- Infeed & outfeed roller table system. (Std. HPL table)
- Releasing agent spray system, installed before pre-mill system.
- IR pre-heat system, installed before glue pot system.
- Vortex cooling system, installed before end trimming unit.
- Cleaning agent spray system, installed before buffing unit.
- Buffing unit, 4 motors. (Std. 2 motors)
- Pressure beam, motorize elevation. (Std. Manual adjustment)
- Chamfer & scraper, remote 0.1mm backward adjustment.
- Quick change system for glue pot.

#### 特定機型選項 EL-700/800/700Q:

- 長條窄料的輔助壓輪系統
- 進料桌面與出料桌面標準為電木 - 選項為滾輪桌面
- 離型劑噴塗系統 - 位於預洗刀頭前
- 紅外線預熱系統 - 位於熱熔膠桶前
- 渦流冷卻系統 - 位於前後修前
- 清潔劑噴塗系統 - 位於拋光布輪前
- 四布輪系統 - 標準雙布輪升級
- 壓力樑電動升降 - 位於機器尾端
- 上下倒角、型刮刀，可以開關選擇退刀約0.1mm
- 熱熔膠桶快拆系統



## EB-6BW

### 自動封邊機 附雙溝槽單元

Edgebander with Double Grooving Unit



**CHAMP  
FOND** 

# Line Boring Machine CB-Series 排鑽機系列

## Feature:

1. Solid piece base.
2. Bores from the bottom side of the work piece, which gives a uniform and accurate bore depth not affected by variations in board thickness. This also prevents marring of the external surfaces of the work piece from by the METAL worktable.
3. Low maintenance independent pneumatic pedal.
4. The control panel is located in the front to allow for easy adjustment of the pneumatic speed regulator and boring method selection.
5. All motors are activated only during boring which minimizes power consumption and noise.

## 特點：

1. 單件式機體經久耐用。
2. 從下側及定規側鑽孔，所以鑽孔深度不受板厚變動影響，額外好處是木板正面在加工時不與金屬桌面接觸，所以不易刮傷木屑則自然落下不會堆積在木板上。
3. 獨立腳踏開關操作簡單維修容易。
4. 便利的設計速度調整器及鑽孔模式選擇都位於機器前面。
5. 電動馬達僅在鑽孔行程中啟動增加使用壽命同時可降低電力消耗及噪音。



## CB-126

側板專用六排鑽

Construction Line  
Boring Machine for  
Side Panel

# & LB-Series

Computerly  
Detail  
Quality  
Innovation



**CB-70** 頂板專用組合鑽  
Construction Line Boring Machine for Top Panel



**LB-21i/27i/35Bi** 單排鑽孔機  
Single Line Boring Machine

## Specification:

Model No.	CB-126	CB-70	型號
Motor	4 HP / 3 ph x 6 PCs	4 HP / 3 ph x 2 PCs	馬達
Motor speed	2,875 rpm (50 Hz) 3,450 rpm (60 Hz)	2,875 rpm (50 Hz) 3,450 rpm (60 Hz)	馬達轉速
Table size	1,650 mm x 850 mm	1,500 mm x 400 mm	工作桌面尺寸
Table height	950 mm	890 mm	工作桌面高度
Maximum work piece size	3,000 mm x 1,230 mm	1,500 mm x 1,150 mm	工作最大尺寸
Maximum thickness of panel	80 mm	60 mm	工作最大厚度
Boring method	Pneumatic-hydraulic combination system 氣動油壓穩速複合系統	Pneumatic-hydraulic combination system 氣動油壓穩速複合系統	鑽孔方式
Maximun boring depth	6 step selector, max. 70 mm 六段深度定位器，深70毫米	6 step selector, max. 70 mm 六段深度定位器，深70毫米	鑽孔深度
Working speed	0~15 cycle/min 每分鐘最快15循環	0~15 cycle/min,每分鐘最快15循環	操作速度
Quick chuck	LB-QUICK CHUCK x 12 PCs 快速接頭12枚	LB-QUICK CHUCK x 12PCs快速接頭12枚	快速接頭
Compress air required	7~10 Kg/cm <sup>2</sup> (100~147 PSI)	7~10 Kg/cm <sup>2</sup> (100~147 PSI)	壓縮空氣
Pitch of spindles	32 mm	32 mm	排鑽軸心節距
No. of total spindles per machine	126 PCs	70 PCs	鑽軸數量
Parallel gear head used	GH-LB-21c 32 x 4 PCs	GH-LB-35L 32 x 2 PCs	平行孔排鑽規格
Distance between 1st & last holes	21 X 2 holes (1,312 mm) 四十二孔雙排	35 holes (1,088 mm) 三十五孔雙排	排鑽最大孔距
Net weight	1,600 Kg (3,520 LB)	900 Kg (1,980 LB)	機器淨重
Gross weight	1,800 Kg (3,960 LB)	1,100 Kg (2,420 LB)	機器毛重
Packing dimensions	311 x 152 x 161 cm	170 x 130 x 120 cm	包裝尺寸
Overall dimensions	300 x 140 x 145 cm	175 x 135 x 135 cm	外觀尺寸

All specifications and design characteristics shown are subject to change without prior notice.  
尺寸規格若有所變更恕不另行通知。



# CHAMP FOND

長風工業股份有限公司  
CHAMP FOND MACHINERY COMPANY

台中市后里區421三豐路36-1號  
36-1 San Feng Rd., Houli, Taichung, Taiwan  
Tel: 886-4-2556-7122 Fax: 886-4-2556-5678  
E-mail: champ.fond@msa.hinet.net



Quicklink to company at  
[www.woodworking.com.tw](http://www.woodworking.com.tw)